

Evaluation of Water Storage Changes in Southeastern Anatolia, Turkey, using GRACE and GLDAS

Emel Zeray Öztürk

Konya Technical University, Department of Geomatics Engineering, Konya, Turkey

Abstract

With climatic changes, access to freshwater resources becomes more limited. Correspondingly, water monitoring methods in sensitive or critical areas in terms of groundwater amount are becoming increasingly important. The monitoring of the water levels in these regions, using appropriate methods and data sets, is highly effective in preventing possible future water crises. This paper aims estimated water storage changes with available tools and data in southeastern Anatolia, Turkey, where hydro-climatological studies are scarce due to limited observations. Data obtained from the Gravity Recovery and Climate Experiment satellite mission and the Global Land Data Assimilation System were used for the analysis of water storage changes in the study area. The results demonstrate that water storage shows a downward trend in all subareas, particularly in high-elevation regions. In addition, climatic changes have both short- and long-term impacts on water storage. Climatic variables (increasing temperature and decreasing precipitation) showed the highest correlation with water storage at 2-month lags. The monitoring of water storage is crucial for the region, and our results confirm the major role of such monitoring in decision-making processes and water resource management.

Keywords

GRACE, GLDAS, Groundwater management, Climate change, Turkey, Water storage changes.

Submitted 31 January 2022, revised 8 April 2022, accepted 5 May 2022

DOI: 10.26491/mhwm/149849

1. Introduction

Water is an indispensable element in human life. Freshwater is of great importance in terms of agricultural productivity, human health, and the economic activities of a growing population. Nevertheless, many regions in the world face water shortages triggered by climate change and anthropogenic factors.

Freshwater accounts for less than 3% of the total amount of water on Earth and is mainly stored in polar glaciers or underground (Chao et al. 2018). For the sustainable management of water, it is essential to assess variations in groundwater storage (Famiglietti et al. 2011; Jiao et al. 2015; Yin et al. 2020).

In many regions of the world, especially in developing countries, valuable water resources tend to decrease due to reasons such as overconsumption of groundwater or inadequate water management (Salem et al. 2017; Moghim 2020). This is also an issue in the Middle East, which is facing severe water scarcity (Voss et al. 2013; Madani 2014; Al-Zyoud et al. 2015; Forootan et al. 2016). Consequently, one of the vital problems for countries of the Middle East is how they can most efficiently use their water resources (FAO 2021). Southeastern Anatolia, through which the rivers Euphrates and Tigris flow, has a strategic importance for the Middle East region, and these rivers have always been a crucial water resource for Middle East countries. In this context, the GAP (Southeastern Anatolia Project) has been running since the beginning of the 1990s, with the aim to optimize the exploitation of the water resources of the region

for hydropower and irrigation (Yılmaz et al. 2019). Water storage changes in Southeastern Anatolia will affect not only the region but also the surrounding countries.

Quantitative models and estimations regarding the temporal-spatial variations of water storage are required for an effective sustainable water resources management in this region (Joodaki et al. 2014). In this context, the Gravity Recovery and Climate Experiment (GRACE) mission can provide valuable gravity data for monitoring global/regional water resource changes (Tapley et al. 2004a; Wouters et al. 2014; Godah et al. 2018; Öztürk et al. 2018, 2020; Öztürk 2020). Trustworthy large-scale values can be obtained from GRACE, and many extensive studies about groundwater changes, using GRACE data, have been carried out in several parts of the world (Rodell et al. 2009; Tiwari et al. 2009; Voss et al. 2013; Nie et al. 2018; Hussain et al. 2021; Massoud et al. 2021; Akhtar et al. 2022; Ali et al. 2022; Wang et al. 2022; Zhang et al. 2022). Tiwari et al. (2011) stated that hydrological variations have strong effects on GRACE measurements. Also, Scanlon et al. (2012) indicated that GRACE has the unique ability to provide gravity data for the assessment of groundwater changes; the authors demonstrated the 2006-2010 drought in the California Central Valley, USA, which showed a decreasing trend in groundwater storage.

The Global Land Data Assimilation System (GLDAS) has also been widely employed for the estimation of groundwater changes (Feng et al. 2013; Huang et al. 2015; Long et al. 2016; Sahoo et al. 2021; Zhang et al. 2021; Dubey et al. 2022; Öztürk 2022; Zheng et al. 2022); it provides the hydrological status of the Earth at a 0.25° resolution (Rodell et al. 2004). In 2008, Syed et al. (2008) combined GRACE and GLDAS data to evaluate terrestrial water storage (*TWS*) and stated that they are consistent with each other. All these studies have shown that the *TWS* dataset obtained from GRACE and GLDAS can be useful for the evaluation and analysis of variations in water resources.

This study was carried out in the southeastern region of Turkey, where hydrology models and satellite gravimetry data from GRACE had not been used before for the analysis of water resource changes. The aim was to investigate the temporal and spatial features of water storage changes as well as the effects of climate change in the region. Additionally, the performances of *TWS*, estimated from the GLDAS, and liquid water equivalent (*LWE*) measurements, estimated from GRACE, were evaluated. Since insufficient observations limit hydro-climatological studies in the region, the results of this study are important in terms of the future of the resources and the influence of climatic changes.

2. Materials and methods

2.1. Study area

The study was performed in the southeastern region of Turkey, over latitude 36.5°N–38.5°N and longitude 36.3°E–44.5°E. The region comprises fertile plains and rugged mountains, of which the Cilo Mountain is the highest part of the study area, with a peak elevation of 4,135 m above sea level. The climate is diverse; the western parts receive more precipitation and have milder temperatures compared to the eastern parts. The eastern region is covered with a layer of snow in winter; the number of days with

snow cover exceeds 80 in the provinces of Van and Hakkari in Subarea 6 (Günel 2013). The research area was divided into nine equal sub-areas, considering the centers of the mass concentrations (mascons) provided by the Goddard Space Flight Center (GSFC), as shown in Figure 1.

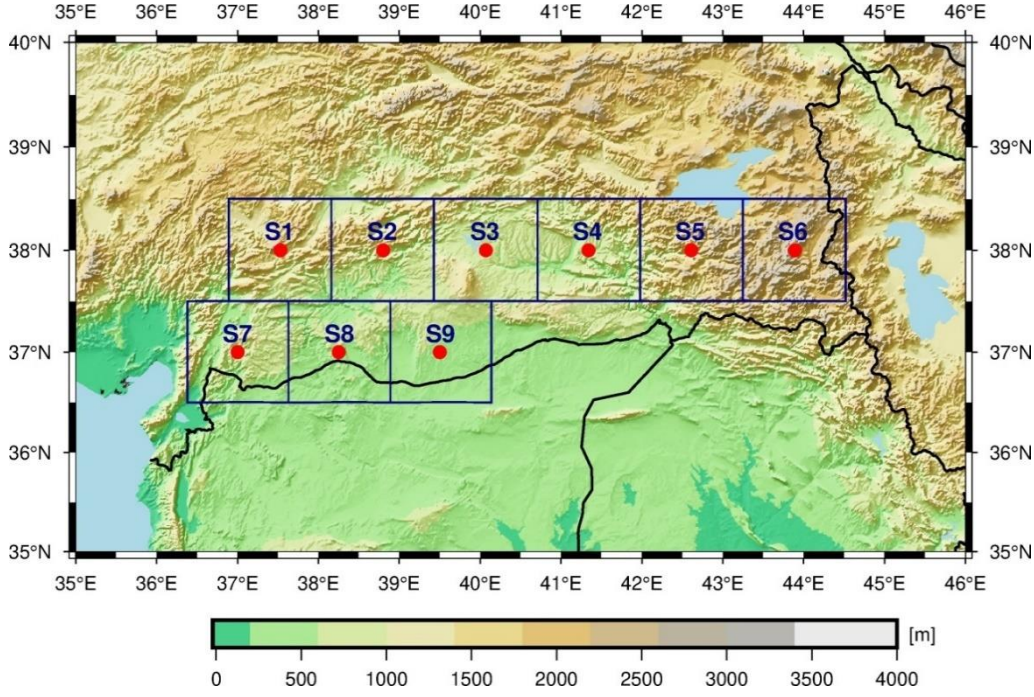


Fig. 1. Map showing the study area with the nine subareas (S1, S2, ..., S9).

2.2. Data and methodology

The terrestrial water budget consists of four major components, shown in Equation 1 (Zhang et al. 2018; Moghim 2020):

$$P - R - G - ET = \Delta TWS, \quad (1)$$

Where P , G , R , ET , and ΔTWS symbolize precipitation, groundwater, runoff, evapotranspiration, and total water storage changes, respectively. We used satellite data and a hydrological model to analyze water storage changes in southeastern Anatolia. To define the relationship between LWE and climate change more clearly, time-lagged cross-correlations between LWE and climatic variables were estimated as follows:

$$\rho_l = \frac{cov(LWE_{t+l}, V_t)}{\sigma_{LWE} \sigma_V}, \quad (2)$$

where V shows the climatic variables (precipitation and temperature) and l is the time lag, varying from 0 to 3 months.

2.2.1. GRACE Mascon products

The GRACE satellite mission is a joint project of NASA (National Aeronautics and Space Administration) and DLR (German Aerospace Center) (Tapley et al. 2004b). The GRACE satellite mission, launched in 2002, measures the time-variable gravity field. These measured variations are exploited for the estimation of mass changes, thus water storage changes; the monthly equivalent water thickness values in a region reveal water storage variation. This research spans 156 months, from January 2003 to December 2015. The equivalent water thickness (liquid water equivalent, *LWE*) from GRACE mascon solutions, provided by the GSFC, consists of soil moisture, plant canopy surface water, accumulated snow, and surface and groundwater (Moghim 2020). The GSFC mascons with a 1×1 spatial resolution can capture all signals from GRACE and can be employed without further processing; they are available at GSFC (2022). Gaps in the data were filled by means of linear interpolation. Since the *TWS* is used for the total water storage changes obtained with the GLDAS, the total water storage changes obtained with GRACE is shown as *LWE* to avoid confusion.

2.2.2. GLDAS Noah Land Surface Model

The GLDAS has been jointly produced by the National Oceanic and Atmospheric Administration (NOAA) and NASA (Rodell et al. 2004). It provides 3-hourly and monthly global data, including hydrological components, heat fluxes, meteorological variables, and radiation, from 1948 onward. In this study, GLDAS-2 0.25-degree products (GLDAS_NOAH025_M) were used. Compared to previous versions, some improvements have been carried out in GLDAS-2. This version has a model version upgrade, uses modified MODIS 20-category vegetation, GTOPO30 for elevation, and Hybrid STATSGO/FAO for soil texture. In this study, GLDAS products of monthly precipitation, temperature, and terrestrial water storage, including plant canopy surface water, snow water equivalent, and soil moisture from January 2003 to December 2015, were employed. The GLDAS datasets are available at GES DISC (2022).

Terrestrial hydro-climatology data obtained from the GLDAS can be used to conveniently assess water storage variations. Terrestrial water storage (*TWS*) consists of all surface and groundwater; it is derived from the GLDAS can be defined as follows (Moghim 2020; Zhang et al. 2021):

$$TWS = SWE + SM + PCSW, \quad (3)$$

where *SWE* is the snow water equivalent, *SM* is the soil moisture composed of four layers which have different depths (0-10 cm, 10-40 cm, 40-100 cm, 100-200 cm; 0-200 cm were used in this study), and *PCSW* represents plant canopy surface water. To assess the relationship between the *LWE* from GRACE and the *TWS* from the GLDAS, monthly anomalies (Δ_{anom}) were estimated with the following equation:

$$\Delta_{anom} = P_{monthly} - P_{mean}, \quad (4)$$

where $P_{monthly}$ reflects monthly the GLDAS and GRACE variables and P_{mean} is the mean value of the variables in the study period (2003-2016).

3. Results and discussion

3.1. LWE from GRACE

When the monthly *LWE* data were analyzed, the maximum change in the water storage in the region was observed for September 2014. Figure 2 illustrates the spatial variations in water storage in the southeastern region of Turkey in September 2014. The maximum decrease in water storage was recorded in Subareas 3, 4, and 5. The same subareas experienced both the most increase and decrease in mass variations in 2004 and 2014, respectively. The time series of the *LWE* average value for all subareas is shown in Figure 3.

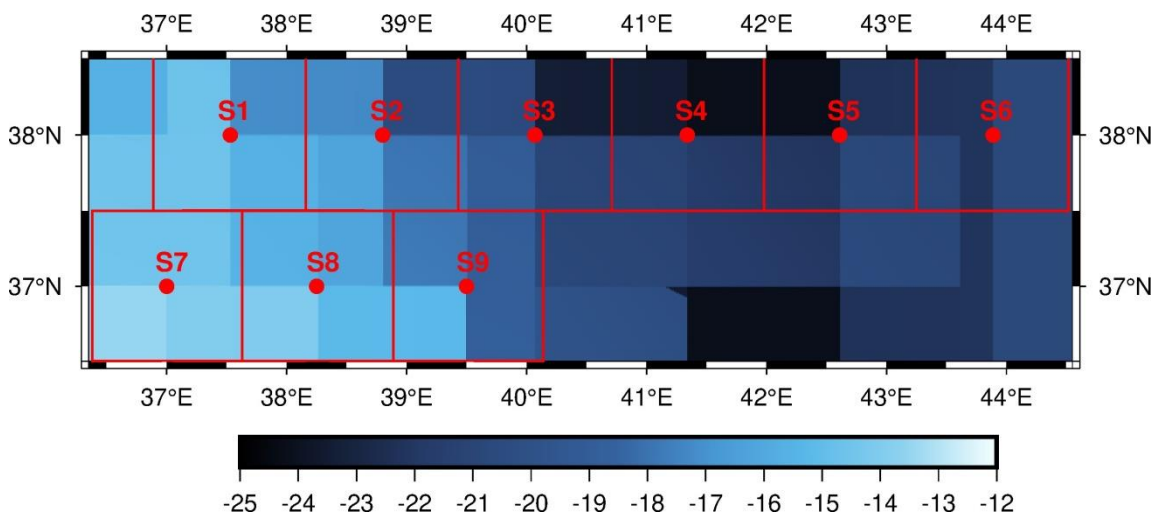


Fig. 2. Water storage changes in September 2014, *LWE* (cm).

Based on Figure 3, the seasonal pattern dominated the *LWE* time series for the study period. Between 2004 and 2014, the maximum increase in the *LWE* was observed in February 2004, and the maximum decrease was observed in September 2014. This result can be attributed to the precipitation over the region (Kayhan, Alan 2012). The average *LWE* showed a remarkable downward trend, with a decrease of ~ 1 cm per year. The decreasing trend in some subareas was more considerable. Particularly, Subareas 5 and 6 showed decreases of approximately 2 cm per year, revealing that in these regions, the discharge amounts are larger than the recharge amounts. The results also indicate that peak points of *LWE* changes for all subareas occurred in spring and autumn and are related to the precipitation pattern. These variations might be a result of the dry and rainy seasons.

The average of the liquid water equivalent for the region was estimated for all months (Fig. 4); all months showed a downward trend, albeit at different degrees. The *LWE* variations showed negative values, especially in the months after July. The month with the maximum reduction ratio was February. The multi-year trend values illustrated in Figures 3 and 4 were estimated via linear regression.

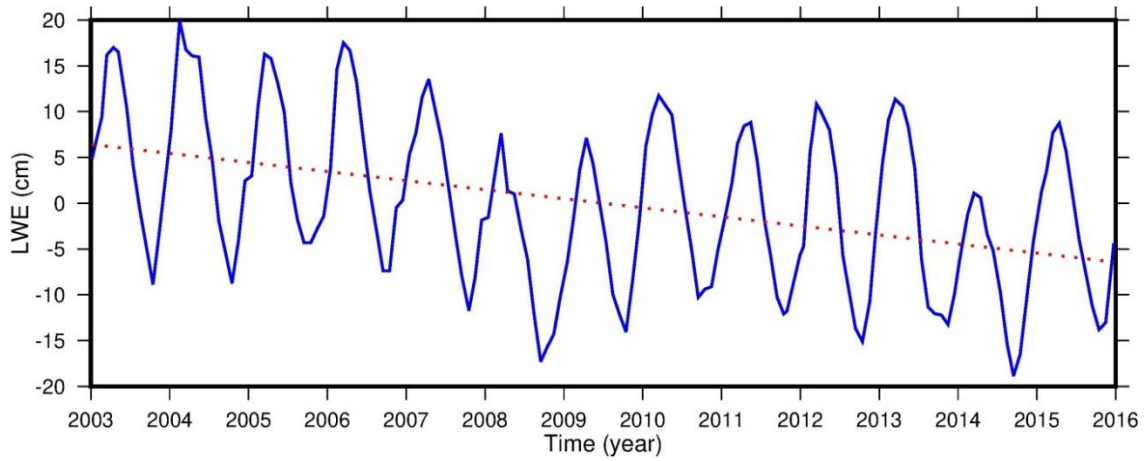


Fig. 3. Spatial average of the liquid water equivalent (LWE) in the study area (blue line) and trend of the LWE (red dots).

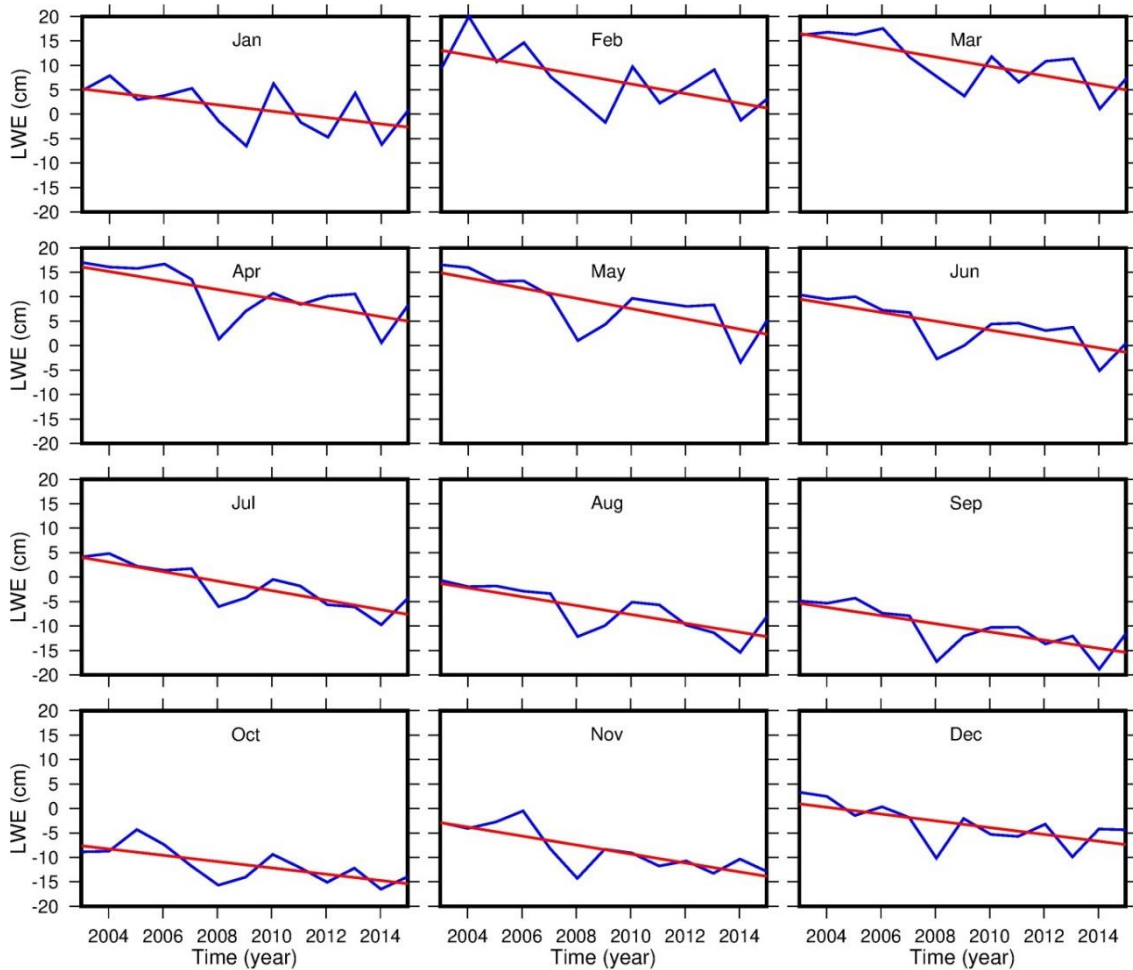


Fig. 4. Average of the liquid water equivalent (LWE) for individual months from 2003 to 2016.

3.2 TWS from GLDAS

To evaluate the TWS trend, the time series of the TWS average value for all subareas is demonstrated in Figure 5. The amounts of snow water equivalent, soil moisture, and plant canopy surface water decreased from 2003 onward. Soil moisture, affected by climate change through variations in temperature and

rainfall, showed a decrease of ~ 15 mm per decade. High temperatures over long periods can result in increased evaporation and, consequently, decreased soil moisture. Furthermore, climate change affects precipitation types as well as the amount and frequency of precipitation, and increasing temperatures cause precipitation to fall as rain rather than snow. In the last decades, the temperature has increased, and the precipitation patterns and types have been affected, especially in growing cities (Tayanç, Toros 1997; Tayanç et al. 2009). As seen in Figure 5, the amount of the *SWE* showed a decrease of approximately 17 mm per decade.

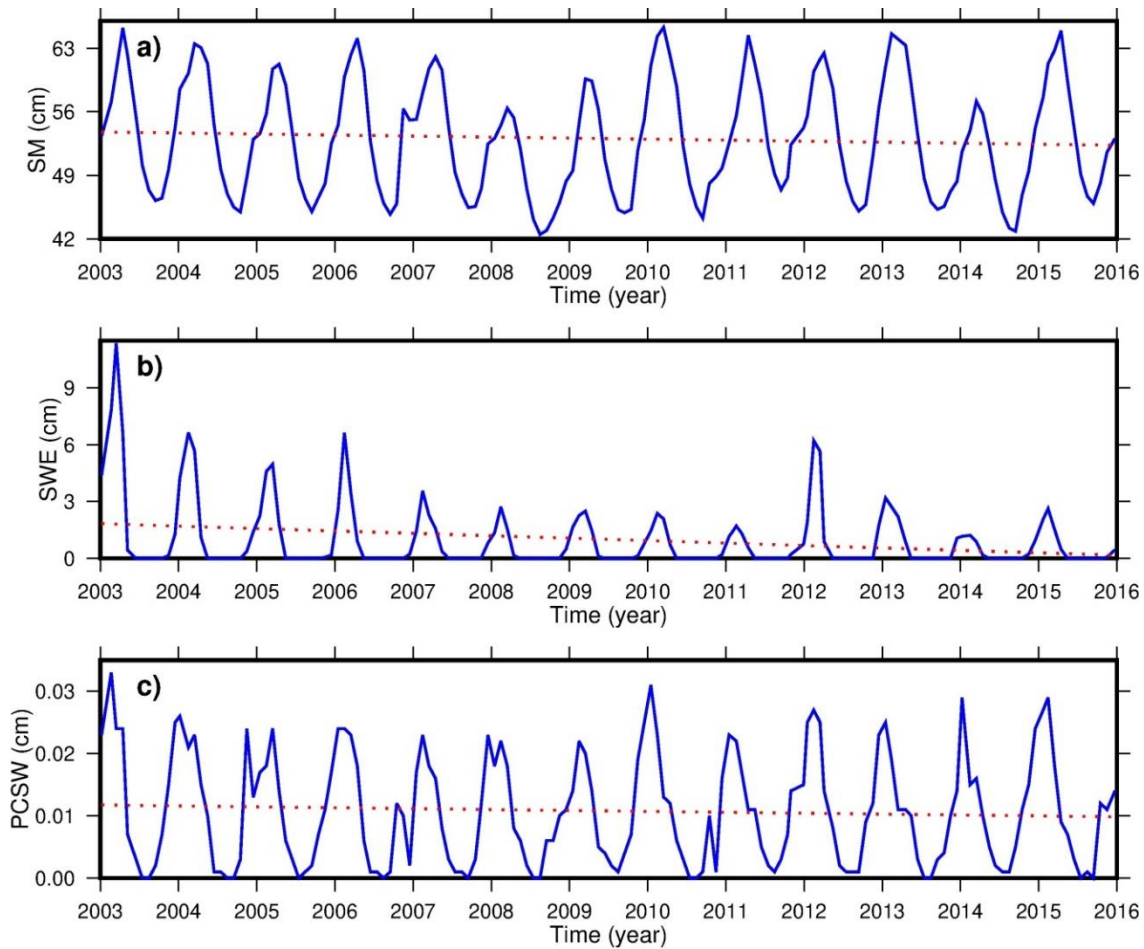


Fig. 5. Domain average of the *TWS* involving soil moisture (a), snow water equivalent (b), and plant canopy surface water (c).

Figure 6 shows the mean *LWE* and *TWS* anomalies based on GRACE and GLDAS. The obtained results provide evidence that both data sets are consistent and highly correlated with each other ($\rho = 0.87$). This consistency indicates that groundwater and surface water in the region are parallel with accumulated snow, soil moisture, and plant canopy surface water during the study period. The relationship between *TWS* and *LWE* anomalies was evaluated spatially, and their cross-correlation values are given in Table 1.

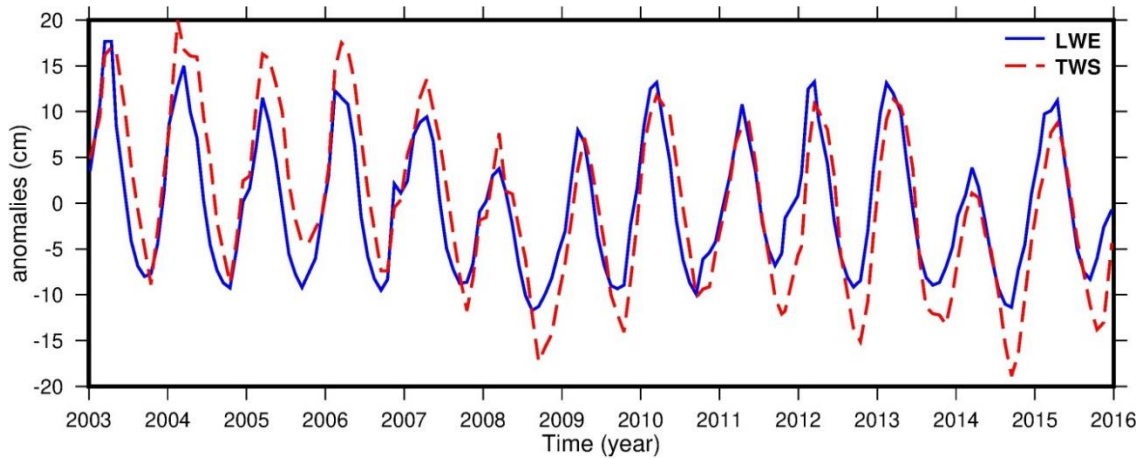


Fig. 6. Anomalies of the liquid water equivalent (*LWE*, blue line) and terrestrial water storage (*TWS*, red dashed line).

Table 1. Correlation between terrestrial water storage (*TWS*) and liquid water equivalent (*LWE*) anomalies for all subareas.

Subareas	Correlation value
1	0.93
2	0.93
3	0.98
4	0.99
5	0.98
6	0.93
7	0.93
8	0.93
9	0.93

According to Table 1, both *LWE* and *TWS* anomalies were highly and positively related in all subareas, which indicates that the *SM*, *SWE*, and *PCSW* components of the terrestrial water storage coincide with the *LWE* trend and that the other components (e.g., surface and groundwater) of the *LWE* do not exhibit a distinct trend during the study period.

3.3. Analysis of water storage changes

Increased temperature and evaporation are results of climate change and have a direct effect on water storage. To evaluate the short- and long-term impacts of climate change, initially, the correlation between climatic variables (temperature and precipitation) and the *LWE* was estimated (Table 2). The anomalies of these climatic variables used in the study were obtained by subtracting the average value from each month.

As seen in the 0 lag column in Table 2, increasing temperatures go along with a reduction in water storage in all subareas, with a negative correlation. In addition, increasing temperatures had the largest negative effect on water storage at the end of 2 months almost in all subareas. Regarding the precipitation results in Table 3, the highest relation was observed again at 2-month lags almost in all subareas. It should be mentioned that the ranges of correlation at 2-month lags was almost twice as much as that of the 0-month lag (without lag). Climatic changes affect some variables immediately and some after a certain period. For

example, soil moisture can increase instantly with precipitation, whereas groundwater resources can only increase when they receive sufficient precipitation. In addition, it is crucial that precipitation accumulates as snowpack, in addition to the amount of precipitation.

Table 2. Correlation between the liquid water equivalent (*LWE*) and anomalies of temperature at 0 lag, 1-month, 2-month and 3-month lags for all subareas.

Subareas	Correlation for time lag			
	0 lag	1-month lag	2-month lag	3-month lag
Subarea 1	-0.32	-0.64	-0.79	-0.74
Subarea 2	-0.18	-0.55	-0.79	-0.83
Subarea 3	-0.25	-0.62	-0.83	-0.83
Subarea 4	-0.30	-0.67	-0.86	-0.83
Subarea 5	-0.34	-0.70	-0.87	-0.82
Subarea 6	-0.33	-0.68	-0.86	-0.81
Subarea 7	-0.28	-0.59	-0.74	-0.72
Subarea 8	-0.29	-0.68	-0.88	-0.85
Subarea 9	-0.34	-0.69	-0.85	-0.80

Table 3. Correlation between the liquid water equivalent (*LWE*) and anomalies of precipitation at 0 lag, 1-month, 2-month, and 3-month lags for all subareas.

Subareas	Correlation for time lag			
	0 lag	1-month lag	2-month lag	3-month lag
Subarea 1	0.32	0.56	0.62	0.54
Subarea 2	0.19	0.48	0.60	0.59
Subarea 3	0.30	0.56	0.63	0.55
Subarea 4	0.35	0.57	0.60	0.50
Subarea 5	0.40	0.60	0.59	0.46
Subarea 6	0.42	0.57	0.52	0.37
Subarea 7	0.17	0.43	0.54	0.52
Subarea 8	0.31	0.62	0.73	0.67
Subarea 9	0.33	0.62	0.66	0.59

In the research area, the highest decrease in *LWE* occurred in Subarea 2, which was located at the highest elevation. The two subareas with the least decrease in *LWE* were Subareas 8 and 9, at lower elevations (Fig. 1). These results indicate that a prolonged snow line in subareas at high elevations decreases against the background of a changing climate. Alternatively, the results verified that climate change (a downward trend in snowpack/precipitation and an upward trend in temperature) has a notable impact on water storage in the region. Besides, anthropogenic activities, mainly agriculture, urbanization, and dam construction, can also influence water storage. At the beginning of 2016, 19 dams were completed in the study region, in the framework of the GAP project. In addition, the area opened to irrigation in 2002 was 198,854 ha and increased to 474,528 ha in 2016 (GAP Administration 2016). The reverse migration and meticulous water management in the region reduced the negative consequences of human activities. However, the negative water budget in the *LWE* and *TWS* results (Figs. 2 and 6) in the region emphasizes the requirement for groundwater monitoring to achieve sustainable water management.

4. Conclusions

Today, many regions of the world are concerned about their available water supply. Human activities, growing populations, and inadequate management make access to clean water increasingly more difficult. The lack of effective and sufficient observations in countries (especially developing countries) results in improper management. In this sense, the major tasks of the satellite and hydrology model in the analysis of water storage in areas with limited observations are emphasized.

The aim of the paper is to investigate the temporal and spatial features of water storage changes along with the effects of climate change in the southeastern region of Turkey. Additionally, terrestrial water storage estimated via the GLDAS and the liquid water equivalent estimated via GRACE were evaluated. Based on these results, water storage shows a downward trend in all subareas, especially in high-elevation regions. The spatial pattern of the *LWE* decline follows the patterns of accumulated snow and soil moisture, which have the largest reductions from the *TWS* components.

Climate change and anthropogenic activities remarkably affect water resources. The results obtained here show that water storage is easily influenced by climatic variables (precipitation and temperature), both directly and indirectly. For example, increasing temperature and decreasing precipitation showed the highest correlations with water storage after 2-month lags, which indicates that the long-term effects of climatic changes need to be well defined and the time delays between the related signals need to be determined. In addition to climate change, there are notable human activities in the study region, such as irrigation, canal establishment, and construction, affecting water resources. The GAP project, which has been ongoing in the region for years, aims for sustainable development with conserving natural resources. This study provides evidence that the GRACE satellite pair provides users with valid data even in regions where observations are limited. In addition, simulated models, such as GLDAS, provide supporting data. The obtained results also show that long-term monitoring of water storage is necessary to prevent possible water shortages in the future and to conserve natural resources. Continuous monitoring, which is a requirement of sustainable water management, is also of vital importance in terms of saving freshwater and delivering it to future generations.

Acknowledgments

The author would like to thank NASA and GSFC for publicly available data.

Availability of data and material

The datasets generated and analyzed during the current study are available in the GRACE and GLDAS repository (<https://ccar.colorado.edu/grace/gsfsc.html>, <https://hydro1.gesdisc.eosdis.nasa.gov/data/GLDAS>).

References

Akhtar F., Nawaz R.A., Hafeez M., Awan U.K., Borgemeister C., Tischbein B., 2022, Evaluation of GRACE derived groundwater storage changes in different agro-ecological zones of the Indus Basin, *Journal of Hydrology*, 605, DOI: 10.1016/j.jhydrol.2021.127369.

- Ali S., Wang Q., Liu D., Fu Q., Rahaman M.M., Faiz M.A., Cheema M.J.M., 2022, Estimation of spatio-temporal groundwater storage variations in the Lower Transboundary Indus Basin using GRACE satellite, *Journal of Hydrology*, 605, DOI: 10.1016/j.jhydrol.2021.127315.
- Al-Zyoud S., Rühaak W., Forootan E., Sass I., 2015, Over exploitation of groundwater in the centre of Amman Zarqa Basin – Jordan: evaluation of well data and GRACE satellite observations, *Resources*, 4 (4), 819-830, DOI: 10.3390/resources4040819.
- Chao N., Luo Z., Wang Z., Jin, T., 2018, Retrieving groundwater depletion and drought in the Tigris-Euphrates Basin between 2003 and 2015, *Groundwater*, 56 (5), 770-782, DOI: 10.1111/gwat.12611.
- Dubey S.K., Lal P., Choudhari P., Sharma A., Dubey A.K., 2022, Assessment of long-term groundwater variation in India using GLDAS reanalysis, [in:] *Advances in Remediation Techniques for Polluted Soils and Groundwater*, P.K. Gupta, B. Yadav, S.K. Himanshu (es.), Elsevier, 219-232, DO: 10.1016/B978-0-12-823830-1.00018-3.
- Famiglietti J.S., Lo M., Ho S.L., Bethune J., Anderson K.J., Syed T.H., Swenson S.C., de Linage C.R., Rodell M., 2011, Satellites measure recent rates of groundwater depletion in California's Central Valley, *Geophysical Research Letters*, 38 (3), DOI: 10.1029/2010GL046442.
- FAO, 2021, Irrigation, Water Development and Management Unit, Food and Agriculture Organization, available online <https://www.fao.org/3/cb7654en/cb7654en.pdf> (data access 06.05.2022).
- Feng W., Zhong M., Lemoine J.-M., Biancale R., Hsu H.-T., Xia J., 2013, Evaluation of groundwater depletion in North China using the gravity recovery and climate experiment (GRACE) data and ground-based measurements, *Water Resources Research*, 49 (4), 2110-2118, DOI: 10.1002/wrcr.20192.
- Forootan E., Khandu K., Awange J.L., Schumacher M., Anyah R.O., van Dijk A.I.J.M., Kusche J., 2016, Quantifying the impacts of ENSO and IOD on rain gauge and remotely sensed precipitation products over Australia, *Remote Sensing of Environment*, 172, 50-66, DOI: 10.1016/j.rse.2015.10.027.
- GAP Administration, 2016, GAP Status Report, Republic Of Turkey Ministry of Industry and Technology, in Turkish, Ankara.
- GES DISC, 2022, Global LDAS, available online <https://hydro1.gesdisc.eosdis.nasa.gov/data/GLDAS> (data access 06.05.2022).
- Godah W., Szelachowska M., Öztürk E.Z., Krynski J., 2018, On the contribution of physical height changes estimated with the use of GRACE satellite mission data to the modernization of a national vertical system, [in:] *American Geophysical Union, Fall Meeting: Abstracts*, G13B-0525.
- GSFC, 2022, Mascon Solutions, available online <https://ccar.colorado.edu/grace/gsfsc.html> (data access 06.05.2022).
- Günel N., 2013, Snowfall, snow cover duration and snow line elevation in Turkey, (in Turkish), *Acta Turcica*, 5, 1-13.
- Huang Z., Pan Y., Gong H., Yeh P.J.-F., Li X., Zhou D., Zhao W., 2015, Subregional-scale groundwater depletion detected by GRACE for both shallow and deep aquifers in North China Plain, *Geophysical Research Letters*, 42 (6), 1791-1799, DOI: 10.1002/2014gl062498.
- Hussain D., Khan A.A., Hassan S.N.U., Naqvi S.A.A., Jamil A., 2021, A time series assessment of terrestrial water storage and its relationship with hydro-meteorological factors in Gilgit-Baltistan region using GRACE observation and GLDAS-Noah model, *SN Applied Sciences*, 3 (5), 1-11, DOI: 10.1007/s42452-021-04525-4.
- Jiao J.J., Zhang X., Liu Y., Kuang X., 2015, Increased water storage in the Qaidam Basin, the North Tibet plateau from GRACE gravity data, *Plos One*, 10 (10), DOI: 10.1371/journal.pone.0141442.
- Joodaki G., Wahr J., Swenson S., 2014, Estimating the human contribution to groundwater depletion in the Middle East, from GRACE data, land surface models, and well observations, *Water Resources Research*, 50 (3), 2679-2692, DOI: 10.1002/2013WR014633.
- Kayhan M., Alan İ., 2012, The spatial precipitation analysis of Turkey in 1971-2010, General Directorate of Meteorology Publications, Ankara, 98 pp.
- Long D., Chen X., Scanlon B., Wada Y., Hong Y., Singh V., Yaning C., Wang C., Han Z., Yang W., 2016, Have GRACE satellites overestimated groundwater storage depletion in the Northwest India aquifers?, *Scientific Reports*, 6 (1), 24398, DOI: 10.1038/srep24398.

- Madani K., 2014, Water management in Iran: what is causing the looming crisis?, *Journal of Environmental Studies and Sciences*, 4, 315-328, DOI: 10.1007/s13412-014-0182-z.
- Massoud E.C., Liu Z., Shaban A., Hage M.E., 2021, Groundwater depletion signals in the Beqaa Plain, Lebanon: evidence from GRACE and sentinel-1 data, *Remote Sensing*, 13 (5), 915, DOI: 10.3390/rs13050915.
- Moghim S., 2020, Assessment of Water Storage Changes Using GRACE and GLDAS, *Water Resources Management*, 34 (2), 685-697, DOI: 10.1007/s11269-019-02468-5.
- Nie N., Zhang W., Chen H., Guo H., 2018, A global hydrological drought index dataset based on gravity recovery and climate experiment (GRACE) data, *Water Resources Management*, 32, 1275-1290, DOI: 10.1007/s11269-017-1869-1.
- Öztürk E.Z., 2020, Estimation and analysis of physical height changes using satellite gravimetry: case studies in Turkey and Greenland, PhD thesis, Konya Technical University Institute of Graduate Studies, Konya.
- Öztürk E.Z., 2022, Monitoring total water storage changes with GRACE mission and GLDAS model and effect of climatic factors on these changes: case study in Konya Basin, (in Turkish), *Doğal Afetler ve Çevre Dergisi*, 8 (1), 103-110, DOI: 10.21324/dacd.971834.
- Öztürk E.Z., Godah W., Abbak R.A., 2018, Analysis of De-correlation filters performance for estimating temporal mass variations determined from GRACE-based GGMs over Konya basin, [in:] FIG Congress 2018, Embracing our smart world where the continents connect: enhancing the geospatial maturity of societies, May 6-11, İstanbul, Turkey.
- Öztürk E.Z., Godah W., Abbak R.A., 2020, Estimation of physical height changes from GRACE satellite mission data and WGHM over Turkey, *Acta Geodaetica et Geophysica*, 55 (2), 301-317, DOI: 10.1007/s40328-020-00294-5.
- Rodell M., Houser P.R., Jambor U., Gottschalck J., Mitchell K., Meng C.-J., Arsenault K., Cosgrove B., Radakovich J., Bosilovich M., Entin J.K., Walker J.P., Lohmann D., Toll D., 2004, The global land data assimilation system, *Bulletin of the American Meteorological Society*, 85 (3), 381-394, DOI: 10.1175/BAMS-85-3-381.
- Rodell M., Velicogna I., Famiglietti J.S., 2009, Satellite-based estimates of groundwater depletion in India, *Nature*, 460, 999-1002, DOI: 10.1038/nature08238.
- Sahoo S., Chakraborty S., Pham Q.B., Sharifi E., Sammen S.S., Vojtek M., Vojtekova J., Elkhachy I., Costache R., Linh N.T.T., 2021, Recognition of district-wise groundwater stress zones using the GLDAS-2 catchment land surface model during lean season in the Indian state of West Bengal, *Acta Geophysica*, 69 (1), 175-198, DOI: 10.1007/s11600-020-00509-x.
- Salem G.S.A., Kazama S., Komori D., Shahid S., Dey N.C., 2017, Optimum abstraction of groundwater for sustaining groundwater level and reducing irrigation cost, *Water Resources Management*, 31, 1947-1959, DOI: 10.1007/s11269-017-1623-8.
- Scanlon B.R., Longuevergne L., Long D., 2012, Ground referencing GRACE satellite estimates of groundwater storage changes in the California Central Valley, USA, *Water Resources Research*, 48 (4), DOI: 10.1029/2011WR011312.
- Syed T.H., Famiglietti J.S., Rodell M., Chen J., Wilson C.R., 2008, Analysis of terrestrial water storage changes from GRACE and GLDAS, *Water Resources Research*, 44 (2), DOI: 10.1029/2006WR005779.
- Tapley B.D., Bettadpur S., Ries J.C., Thompson P.F., Watkins M.M., 2004a, GRACE measurements of mass variability in the Earth system, *Science*, 305 (5683), 503-505, DOI: 10.1126/science.1099192.
- Tapley B.D., Bettadpur S., Watkins M.M., Reigber C., 2004b, The gravity recovery and climate experiment: mission overview and early results, *Geophysical Research Letters*, 31 (9), DOI: 10.1029/2004GL019920.
- Tayanç M., İm U., Doğruel M., Karaca M., 2009, Climate change in Turkey for the last half century, *Climatic Change*, 94 (3), 483-502, DOI: 10.1007/s10584-008-9511-0.
- Tayanç M., Toros H., 1997, Urbanization effects on regional climate change in the case of four large cities of Turkey, *Climatic Change*, 35 (4), 501-524, DOI: 10.1023/A:1005357915441.
- Tiwari V.M., Wahr J., Swenson S., 2009, Dwindling groundwater resources in northern India, from satellite gravity observations, *Geophysical Research Letters*, 36 (18), DOI: 10.1029/2009GL039401.
- Tiwari V.M., Wahr J.M., Swenson S., Singh B., 2011, Land water storage variation over southern India from space gravimetry, *Current Science*, 111 (4), 536-541.

- Voss K.A., Famiglietti J.S., Lo M., de Linage C., Rodell M., Swenson S.C., 2013, Ground water depletion in the Middle East from GRACE with implications for transboundary water management in the Tigris – Euphrates – Western Iran region, *Water Resources Research*, 49 (2), 904-914, DOI: 10.1002/wrcr.20078.
- Wang H., Xiang L., Steffen H., Wu P., Jiang L., Shen Q., Li Z., Hayashi M., 2022, GRACE-based estimates of groundwater variations over North America from 2002 to 2017, *Geodesy and Geodynamics*, 13 (1), 11-23, DOI: 10.1016/j.geog.2021.10.003.
- Wouters B., Bonin J.A., Chambers D.P., Riva R.E.M., Sasgen I., Wahr J., 2014, GRACE, time-varying gravity, earth system dynamics and climate change, *Reports on Progress in Physics*, 77 (11), DOI: 10.1088/0034-4885/77/11/116801.
- Yilmaz Y.A., Sen O.L., Turuncoglu U.U., 2019, Modeling the hydroclimatic effects of local land use and land cover changes on the water budget in the upper Euphrates – Tigris basin, *Journal of Hydrology*, 576, 596-609, DOI: 10.1016/j.jhydrol.2019.06.074.
- Yin W., Li T., Zheng W., Hu L., Han S.-C., Tangdamrongsub N., Splrak M., Huang Z., 2020, Improving regional groundwater storage estimates from GRACE and global hydrological models over Tasmania, Australia, *Hydrogeology Journal*, 28, 1809-1825, DOI: 10.1007/s10040-020-02157-3.
- Zhang J., Liu K., Wang M., 2021, Downscaling groundwater storage data in China to a 1-km resolution using machine learning methods, *Remote Sensing*, 13 (3), 523, DOI: 10.3390/rs13030523.
- Zhang X., Ren L., Feng W., 2022, Comparison of the shallow groundwater storage change estimated by a distributed hydrological model and GRACE satellite gravimetry in a well-irrigated plain of the Haihe River basin, China, *Journal of Hydrology*, 610, DOI: 10.1016/j.jhydrol.2022.127799.
- Zhang Y., Pan M., Sheffield J., Siemann A.L., Fisher C.K., Liang M., Beck H.E., Wanders N., MacCracken R.F., Houser P.R., Zhou T., Lettenmaier D.P., Pinker R.T., Bytheway J., Kummerow C.D., Wood E.F., 2018, A Climate Data Record (CDR) for the global terrestrial water budget: 1984-2010, *Hydrology and Earth System Sciences*, 22 (1), 241-263, DOI: 10.5194/hess-22-241-2018.
- Zheng Z., Ning L., Dai D., Chen L., Wang Y., Ma Z., Yang Z.-L., Zhan C., 2022, Water budget variation, groundwater depletion, and water resource vulnerability in the Haihe River Basin during the new millennium, *Physics and Chemistry of the Earth, Parts A/B/C*, DOI: 10.1016/j.pce.2022.103141.